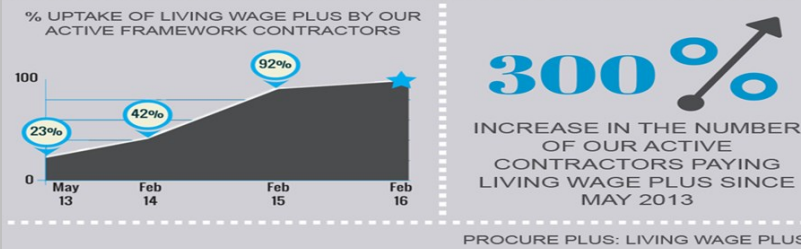


PPH Social Accounts



What is also important to us is the payment of a fair wage by Framework contractors



Full information available on **pg 41** of the social accounts document

Our **social value** accounts are able to show the economic impact of helping people into employment which is at the heart of our business.

Savings to the exchequer	2013/2014	2014/2015
Number of people into employment	120	188
Welfare benefit savings	£936,000	£1,466,400
Health savings	£60,960	£95,504
Crime savings	£1,131,160	£1,772,088
Total savings	£2,128,570	£3,333,992
Net savings assuming 75% attribution	£1,596,427	£2,500,494

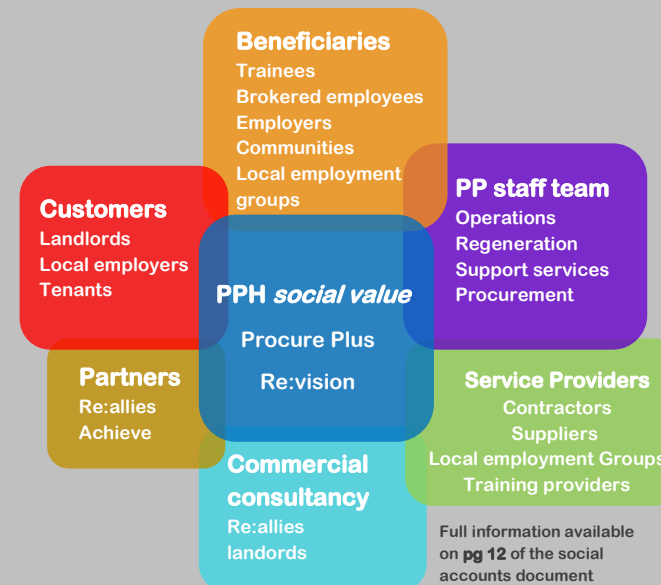
Full information available on **pg 52** of the social accounts document

PPH Social Accounts



At PPH we put **social value** at the heart of everything that we do. Our social accounts for 2014 / 2015 show how this is done and what has been achieved.

Our full social accounts are available on <http://www.procure-plus.com/downloads/social-value-reports/>



At Procure Plus Holdings (PPH) we are committed to making a difference by:

Constantly improving the procurement process for our customers, registered (housing) Providers.

Quality of life for tenants and other residents including those experiencing exclusion and unemployment in the neighbourhoods served by our customers.

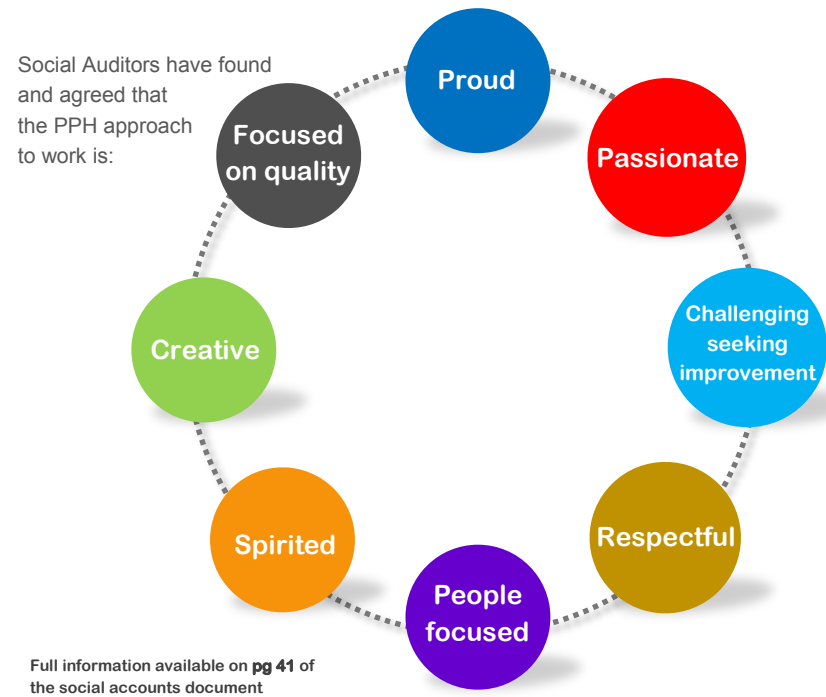
Developing partnerships to extend and strengthen the way we work with customers and other key stakeholders to achieve our overall purpose.

Influencing the policy environment in which we work in order to maximise the social and economic impact.

Our **social value** activities mean that we consider the impact of our business beyond financial success and focus on what it does to create lasting value for the communities in which we work.



Our approach



Our support really does make a difference

"I feel as an ex-offending person I have had more doors opened for me which doing for myself would have been impossible"

"Being in full time employment gives me confidence. I enjoy looking at my wages at the end of the week"

"I had no job & was at a low point in my life, getting out to work & college has helped me meet new people, new friends & has upped my confidence"

"At first I thought there was no hope & I would need to break the rules to achieve anything, nobody gave me a chance but Procure Plus did & I haven't looked back"

"Procure Plus gives very high quality employee support"

Full information available on **pg 23 & 25** of the social accounts document

Positions created or supported

210 Framework positions

99 New positions
111 Brought forward & supported

122

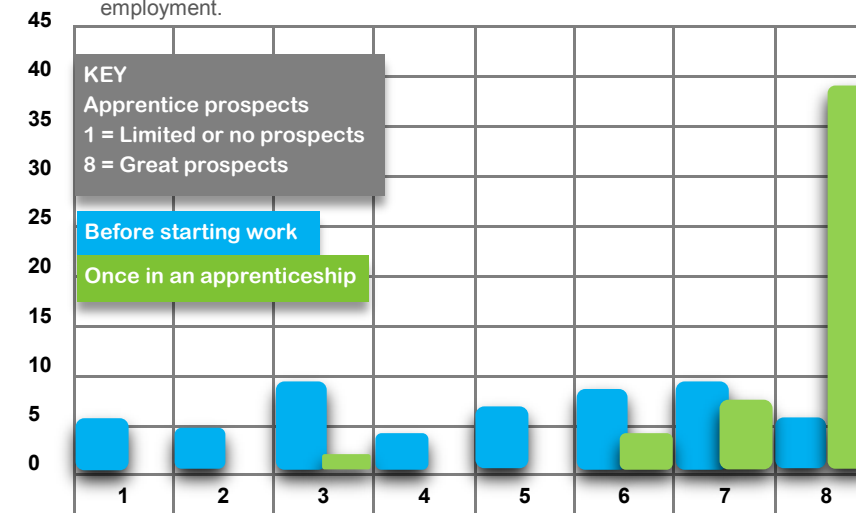
Brokered positions

Over 300 people have been provided with support into employment through 2014 / 2015. 63% of these positions were secured through the construction related activity supported by PPH on behalf of its RP customers. The brokered positions are with independent employers from a variety of sectors locally.

Full information available on **pg 19** of the social accounts document

Of the 210 supported through framework activity 75% came from a place of disadvantage and over 50% were unemployed for over 6 months before taking up this opportunity. The value of support provided can be seen in the positive comments received from those in framework positions.

The difference our support makes to apprentices' view of their prospects is measured by their view before they start work and once they have commenced employment.



Full information available on **pg 27** of the social accounts document